



(This pattern makes an adult-sized silk chiffon maxi skirt)

Supplies:

2 yd outer fabric (silk chiffon preferred, polyester chiffon is acceptable)
2 yd lining fabric (silk lining fabric preferred, polyester lining fabric is acceptable)
½ yd interfacing (silk organza preferred, non-fusible lightweight interfacing is acceptable)
coordinating thread (cotton preferred, polyester also acceptable)
7" invisible zipper

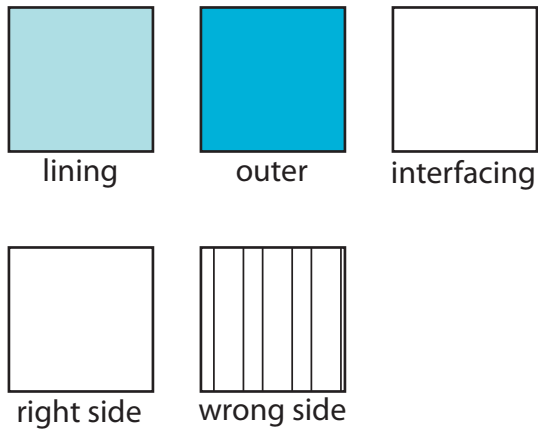
Pattern pieces:

Waistband	cut 2 from outer fabric cut 4 from lining fabric cut 2 from interfacing
Skirt lining	cut 2 front lining fabric
Skirt outer	cut 2 from outer fabric

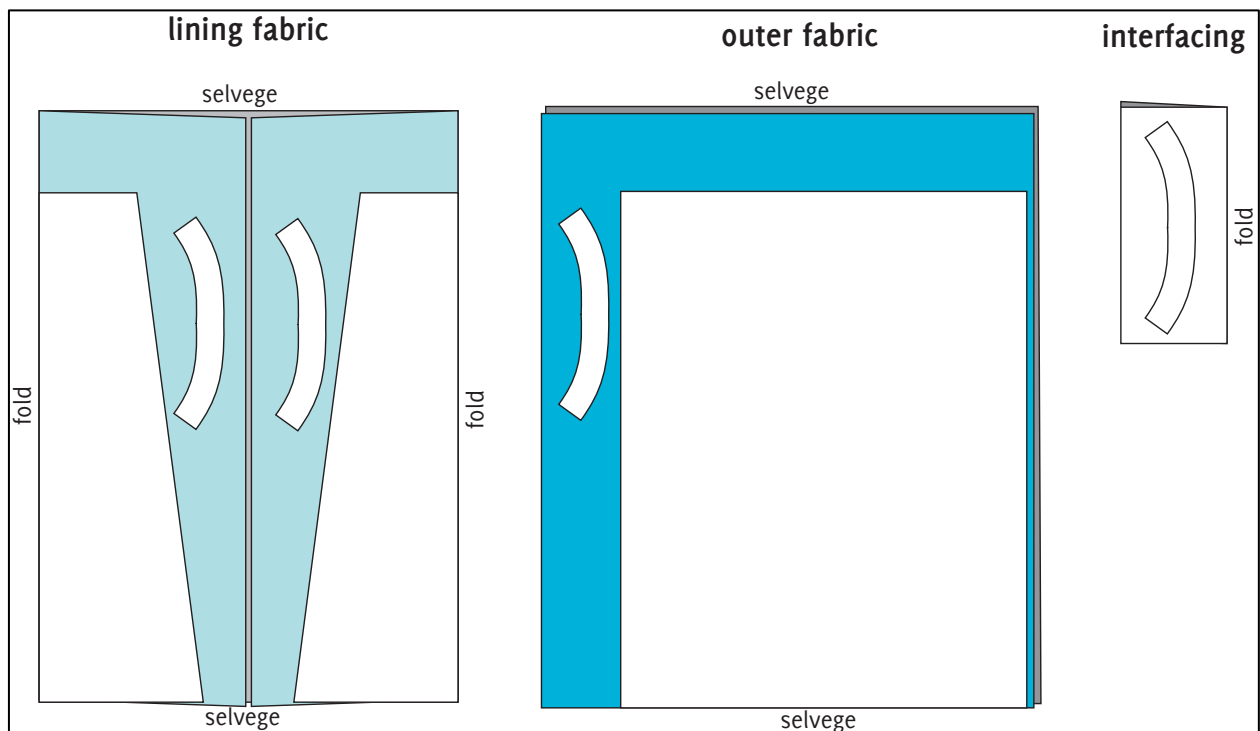
This sewing pattern by Loreнна Buck Designs is licensed under a Creative Commons Attribution-Non-commercial-Share Alike 3.0 United States License.

Visit lorennabuck.com or lorennabuck.blogspot.com for more patterns and inspiration

Legend:



Pattern Layout:

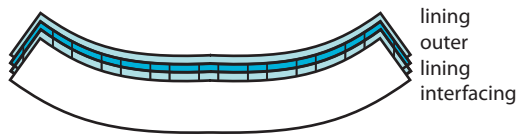


Cutting Instructions:

Skirt lengths assume that selvege edge is left as skirt hem (no hem needed). Adjust length of skirt pattern pieces according to desired length for maxi skirt, and add length if hemming is desired.

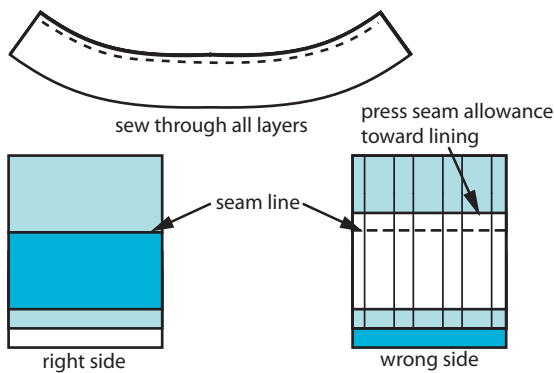
Sewing instructions:

1. Layer fabrics for waistband.



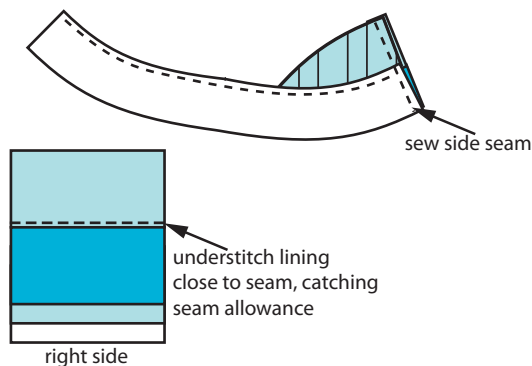
- Begin with waistband piece in lining fabric, right-side-up.
- Place outer fabric, right-side-down, on top of lining.
- Place a second layer of lining, right-side-down, on top of outer fabric.
- Layer interfacing on top of lining. Pin all layers together.

2. Sew waistband.



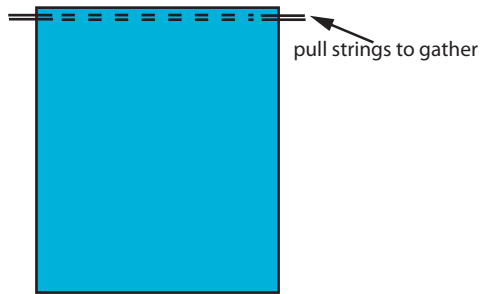
- Sew along top edge of waistband with 5/8" seam allowance through all layers.
- Trim seam and clip fabric around curves, being sure not to cut stitching line.
- Flip waistband right side out, such that bottom lining fabric is right-side-out on one side, and outer fabric, then lining fabric, then interfacing layers are all right-side-out on other side of the waistband.
- Press seam toward single lining layer.

3. Finish waistband.

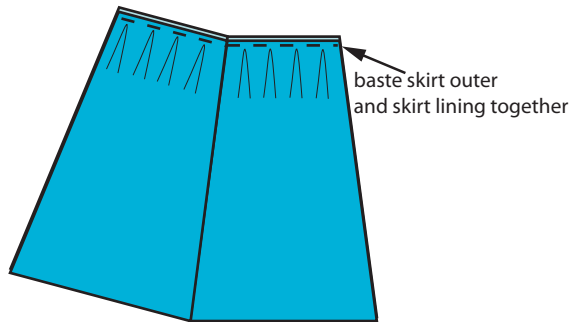


- Repeat steps 1 and 2 with your remaining waistband pieces.
- Sew both waistband pieces, right-sides-together, at one short edge. Press seam open.
- Understitch lining at top edge of waistband, making sure to catch seam allowance.
- If desired, baste remaining layers (outer, lining and interfacing) together along bottom edge.

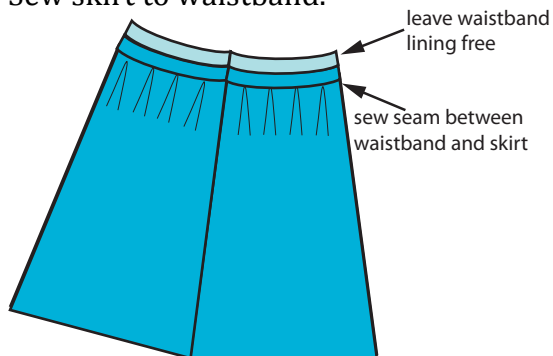
Gather outer pieces.



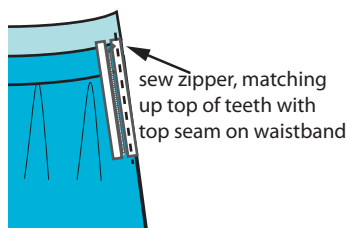
4. Sew outer and lining skirt pieces.



5. Sew skirt to waistband.



6. Sew zipper to skirt.



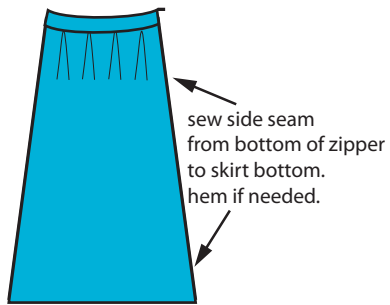
- e. Sew along top of skirt outer, $\frac{3}{8}$ " from edge, with longest stitch length selected
- f. Sew another line of stitching $\frac{1}{2}$ " from edge with longest stitch length selected
- g. Pull both strings to gather, adjusting gathers evenly, until the top edge of skirt outer is the same length as the top edge of the skirt lining

- a. Match up skirt outer pieces, right side together, and sew along one side
- b. Repeat with skirt lining pieces.
- c. Place skirt outer, right side up, on top of skirt lining (also right side up)
- d. Baste skirt outer to skirt lining along top edge

- a. Pin bottom edge of waistband (the side with all the layers, leaving the understitched lining layer free) to top edge of skirt, right sides together and matching up side seam.
- b. Sew skirt to waistband.
- c. Press seam toward waistband.

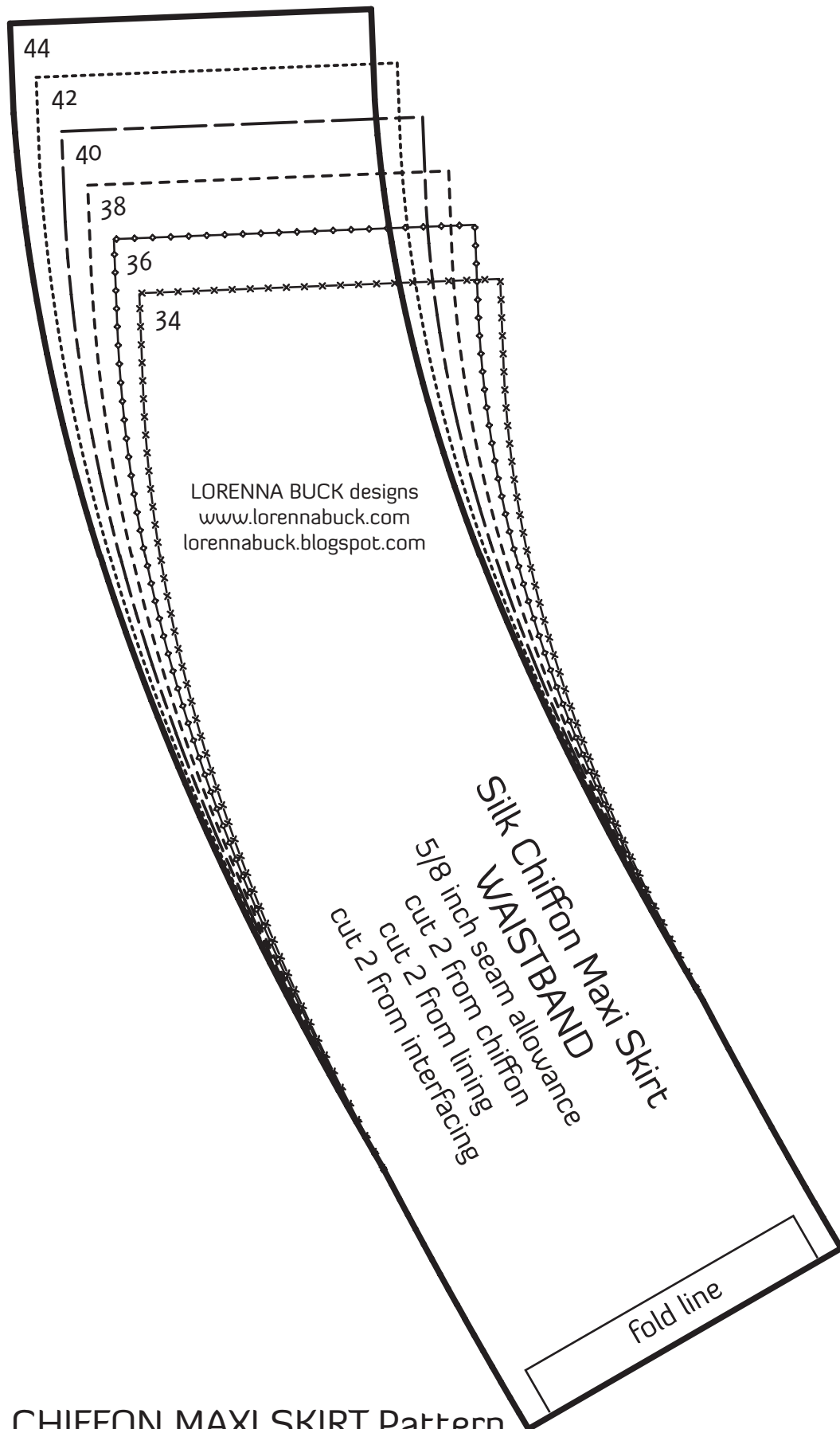
- a. Open invisible zipper and pin, right-sides-together, to top-side of skirt, matching up top of zipper teeth with top of waistband. Sew with invisible zipper foot.
- b. Close zipper and pin free side to other top-side edge of skirt, right sides together and matching top of zipper teeth with top of waistband. Open zipper and sew with invisible zipper foot.

7. Finish skirt.



- a. Fold under raw edge of waistband lining and slipstitch into place to finish waistband.
- b. Sew remaining seam on outer fabric, starting at bottom of zipper, and keeping lining fabric free.
- c. Sew remaining side seam on lining fabric, starting at bottom or zipper.
- d. Finish all seams with pinking shears (if desired) and hem (if needed) .
- e. Sew hook and eye by hand above waistband.

8. Wear it!

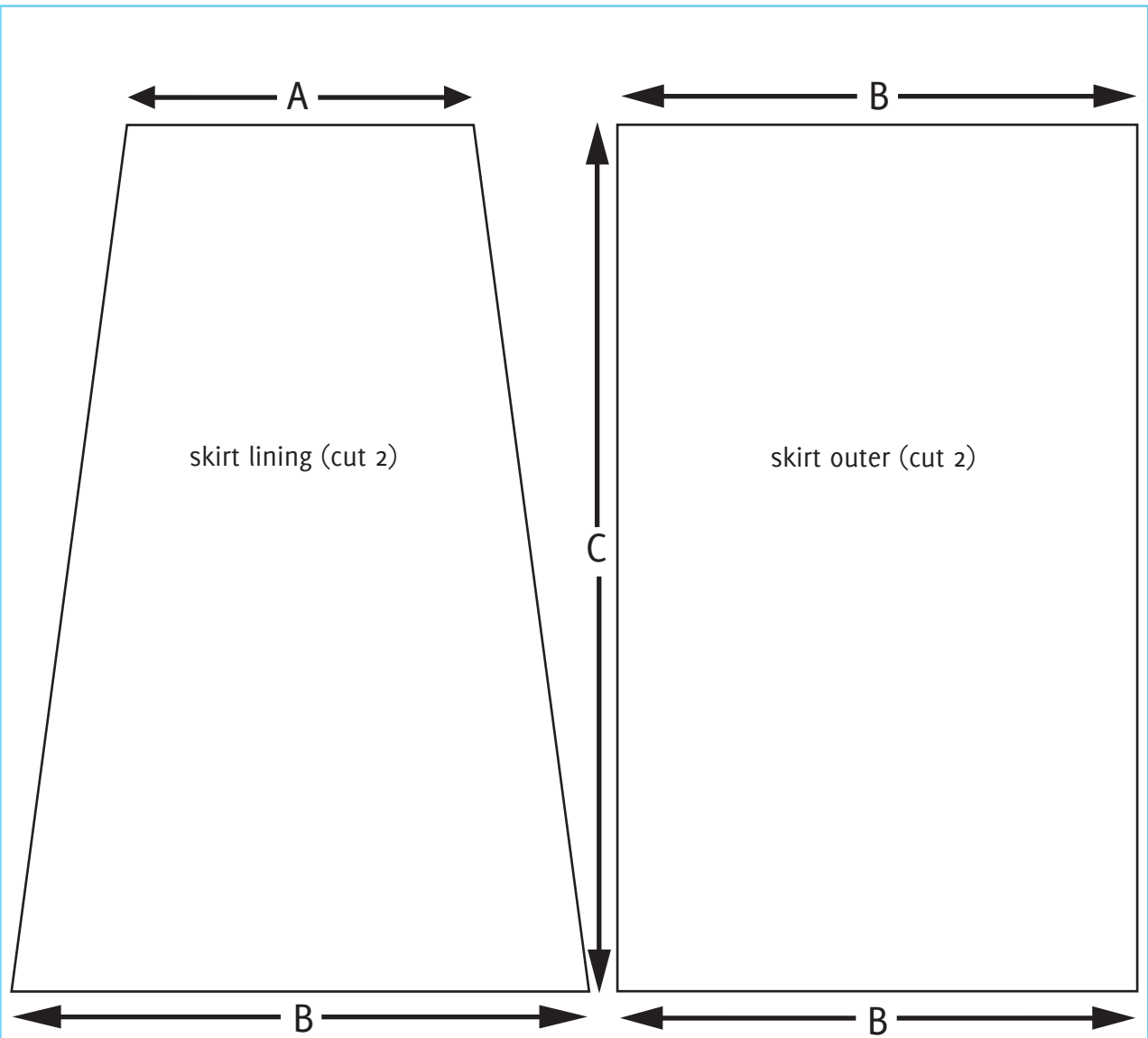


LORENNABUCK designs
www.lorennabuck.com
lorennabuck.blogspot.com

Silk Chiffon Maxi Skirt
WALSTBAND
5/8 inch seam allowance
cut 2 from chiffon
cut 2 from lining
cut 2 from interfacing

fold line

SILK CHIFFON MAXI SKIRT Pattern
LORENNABUCK designs



	34	36	38	40	42	44
A	16"	16.75"	17.5"	18.25"	19"	19.75"
B	32"	34"	35"	37"	38"	40"
C	40"	40"	41"	42"	42"	42"

SILK CHIFFON MAXI SKIRT Pattern
 LORENNA BUCK designs