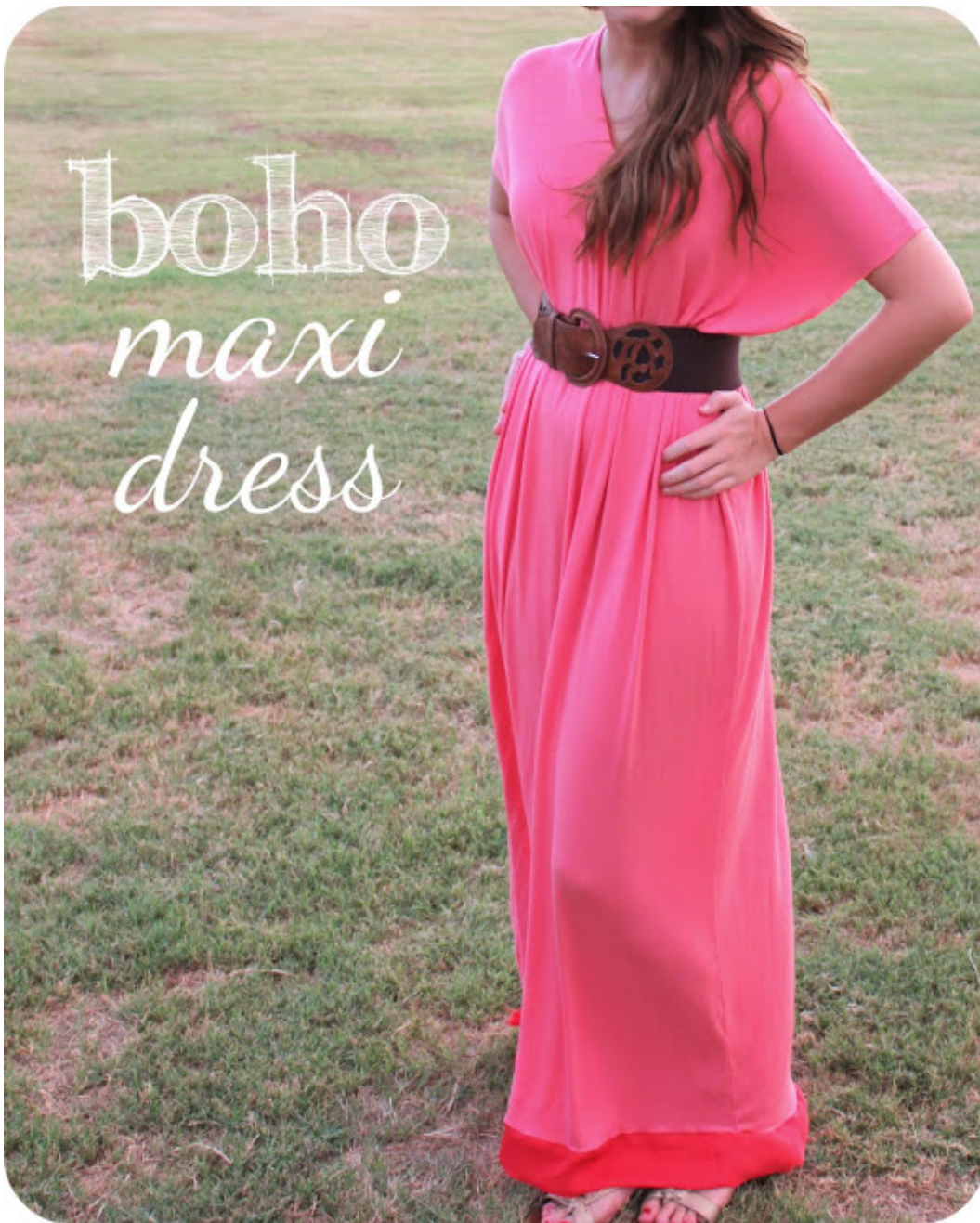


Boho Maxi Dress: a tutorial

<http://sweet-verbena.blogspot.com/2011/07/boho-maxi-dress-tutorial.html>

May 15, 2013



This dress is an incredibly easy make. By now you may have realized that I'm all about the simple projects. I'm far from being a master seamstress, I just work with what I know and try to learn as I go.

I've never actually owned a maxi dress before, but now I might be hooked. They're so comfy and they have the added benefit of hiding my neglected, less-than-hairless legs.

Want to make one too??

Materials:

1 4/5 yd Extra Stretchy Jersey Knit (60"wide) (You want a lightweight knit. If the knit is too heavy the dress will look frumpy.)

1/3 yd Trim Fabric

Dye

I know that there are many of you out there who have a fear of sewing with knit. Don't be afraid! Knit happens to be one of my favorite materials. It's extremely comfortable, breezy, and light. It's also a very forgiving fabric, especially in a project like this where there is a lot of gather.



A couple of things to keep in mind when sewing with knit...

- Let the material go at it's own pace when feeding through the machine
- Use a zig zag stitch or a stretch stitch. This allows the seam to stretch unlike a straight stitch.
- A walking foot and a ball point needle help avoid puckering. However I didn't use either of these. I just worked with what I had.
- Knit doesn't fray! Another reason knit is awesome in my book. Leave your edges raw if you like.

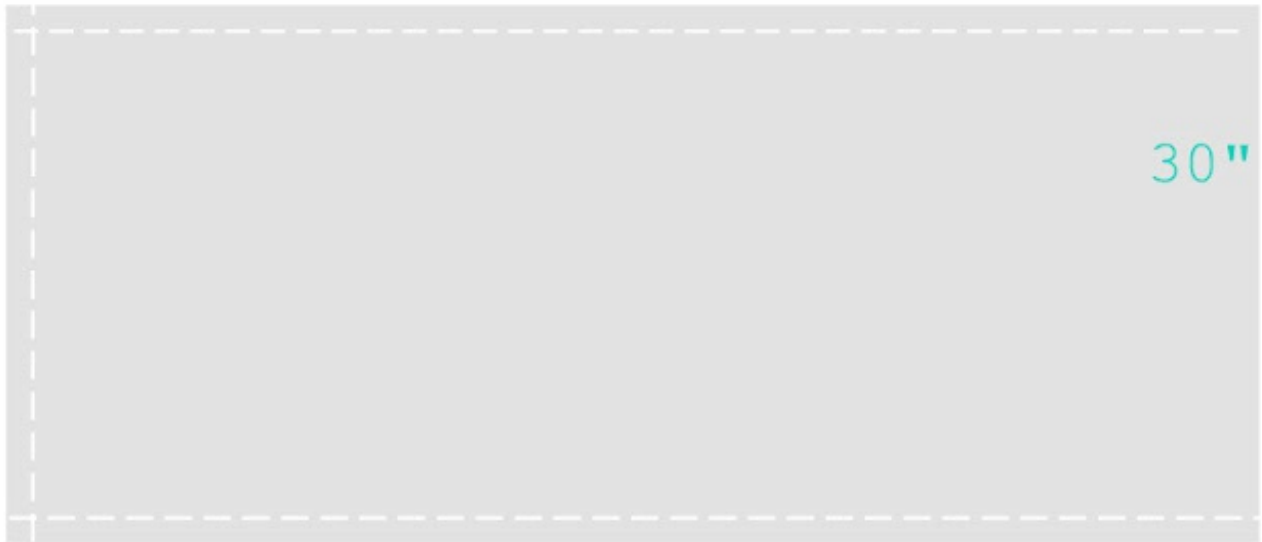
Tutorial:

Fold your panel of fabric in half along the 60" side.

Because it was so huge, it was difficult to get a decent pic of this step...so I drew up this nice little chart instead.

Sew everywhere you see the white dashed line.

Fold



65"





After your 3 seams, turn your fabric inside out. At this point, you basically have a *giant pillowcase*.

At the closed, short end of the dress (what will be the top of the dress), determine the middle point. Cut straight down 6 inches. This gave me a nice, modest neckline. Go shorter or deeper if you like.

Cut out an 8" strip at both ends

for the sleeves.





Now you'll have something like this:
reminds me of Cindy Lou Who
Plenty of length at the bottom even for my tall, 5' 9" self. Don't cut just yet! I made this mistake and had to sew a trim at the bottom to add length after I washed and dried it.
Now if you like the white, keep it as is and skip the next step.

Dye:

So I searched long and hard for coral fabric dye to no avail. Finally I came across [RIT's color formula guide](#) and realized duh, mix the colors to create your own perfect hue! I guess that's kind of obvious.

A little experimentation and I found the combination to achieve the perfect coral.

You'll need:



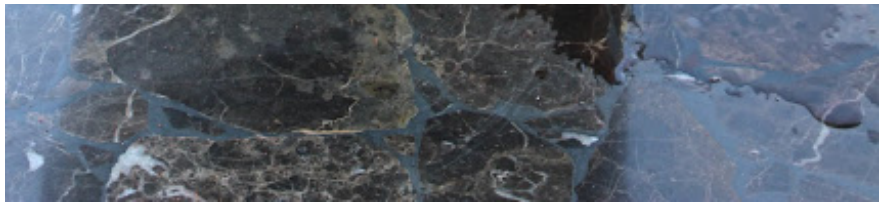


The pictures of the dress make it look a little darker than it really is. It's slightly lighter in person. Alter the recipe as you see fit. Less water will give you a darker hue and more water will give you a lighter hue.



1 whole package of tangerine RIT dye + 3 tsp. fuchsia RIT dye + 4 gallons hot water
You'll need a big pail, bin, etc.
Dissolve the dye in a glass of hot water
Pour the concentrated dye solution into the pail with the other 4 gallons of hot water
Mix well and start dyeing your dress.







Keep the fabric moving constantly to avoid uneven dyeing. It only took a couple of minutes to get the color I wanted. Remember that the color you end up with will be 2-3 shades lighter than what comes out of the dye bath. Rinse well in the sink. Machine wash and dry.



As I mentioned, I made the mistake of cutting length off the bottom too soon and had to add a trim. It ended up adding interest to the dress and I'm happy with how it turned out.

If you want to add a trim too:

- Cut 8" strips of your trim fabric
- Sew together strips until you have a 65" long by 8" wide panel of fabric
- Iron in half
- Pin to the bottom of the dress, right sides together.
- Stitch all the way around

and done.

Have fun in your new, whirly,
twirly, boho-chic dress!

...

